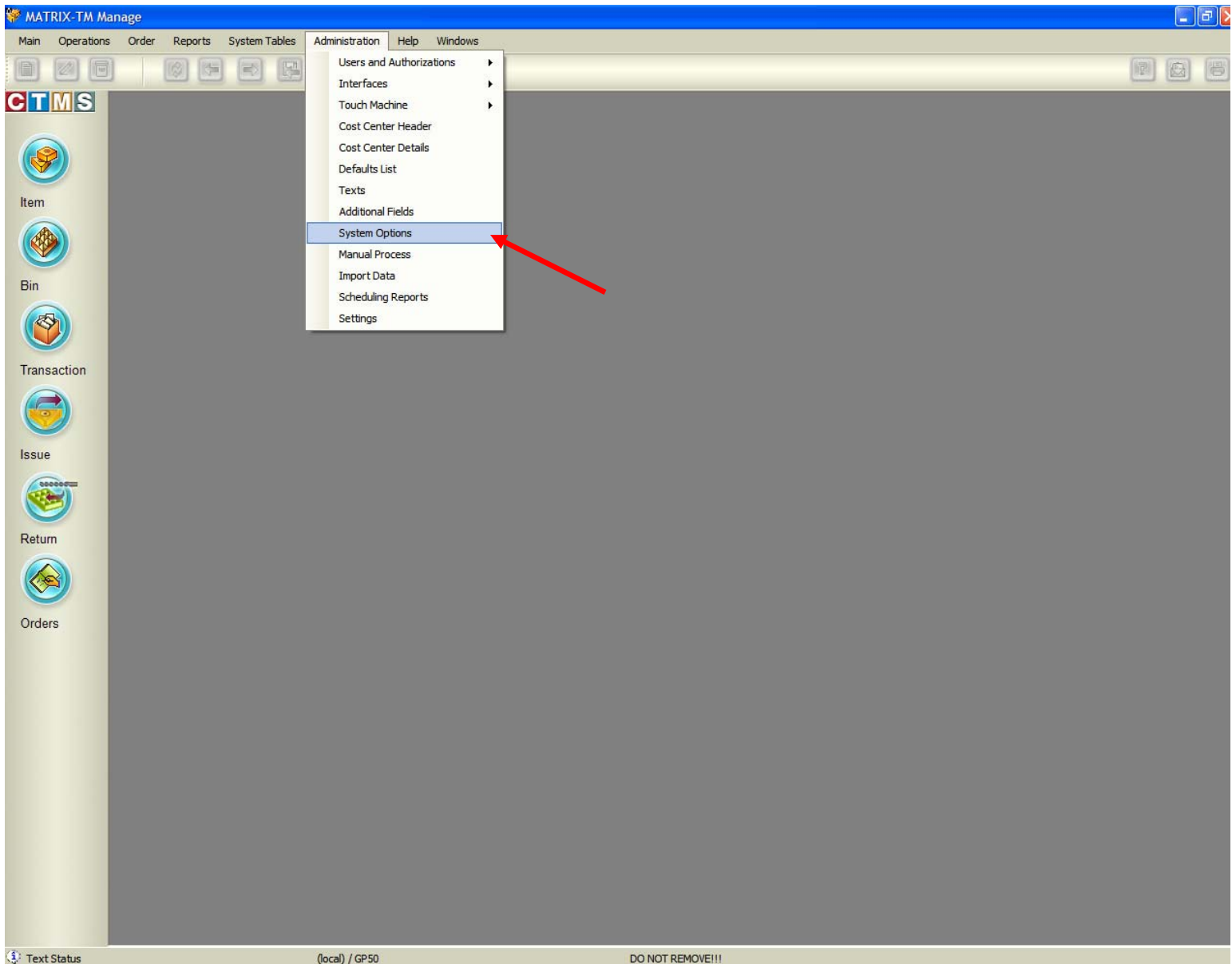


Start by going into Matrix-TM Manage software. Now go to the Menu bar and select Administration and go to System Options.



You should see the following on your screen. Click on the Group drop down box and select path and files.

Search System Options

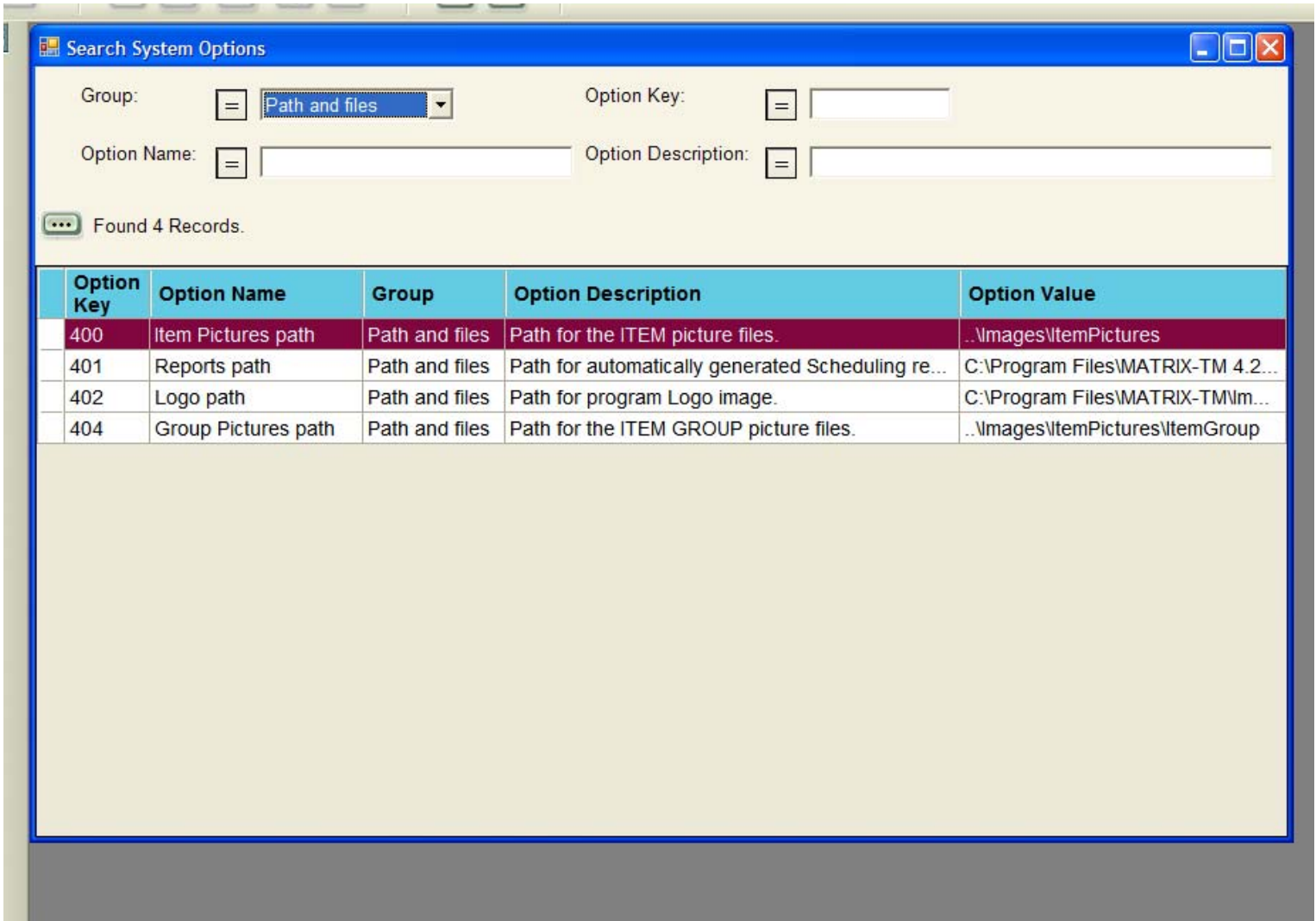
Group: [] Option Key: []

Option Name: [] Option Description: []

Found 70 Records.

Option Key	Option Name	Group	Option Description	Option Value
0	Database Version	System Par...	Database Version - D o N o t C h a n g e !!!	4.2
1	Installation Path	System Par...	MATRIX-TM Installation Path - D o N o t C h ...	C:\Program Files\MATRIX-TM 4.2
2	Scheduler task com...	System Par...	Scheduler task computer Name - D o N o t C ...	
105	Over Receive Perce...	Operation	The percentage that determines the Additional ...	10
106	FIFO Bin Selection	Operation	Issue in FIFO (First In, First Out) order so that t...	No
107	Activate issue budg...	Operation	If the budget is activated, then before allowing i...	Yes
108	Activate issue budg...	Operation	If the budget is activated, then before allowing i...	Yes
109	Force to issue old it...	Operation	If checked, the TOUCH module will force to issu...	No
110	Display options for p...	Operation	Display options to close order line or remain op...	Yes
111	Number of referenc...	Operation	Number of reference fields to use on 'Receive' ...	0
112	Type of Reference fi...	Operation	Type of Reference fields for Interfaces: Numeri...	txt
201	Font Size	General	Font Size used for buttons in TOUCH module.	Small
203	System Currency Key	General	The system currency key.	0
204	Picture File Type	General	File type for the product pictures.	gif
205	Number of Records ...	General	Maximal number of records to display in search...	2000
206	Default Unit of Meas...	General	Default unit of measure for new items.	0

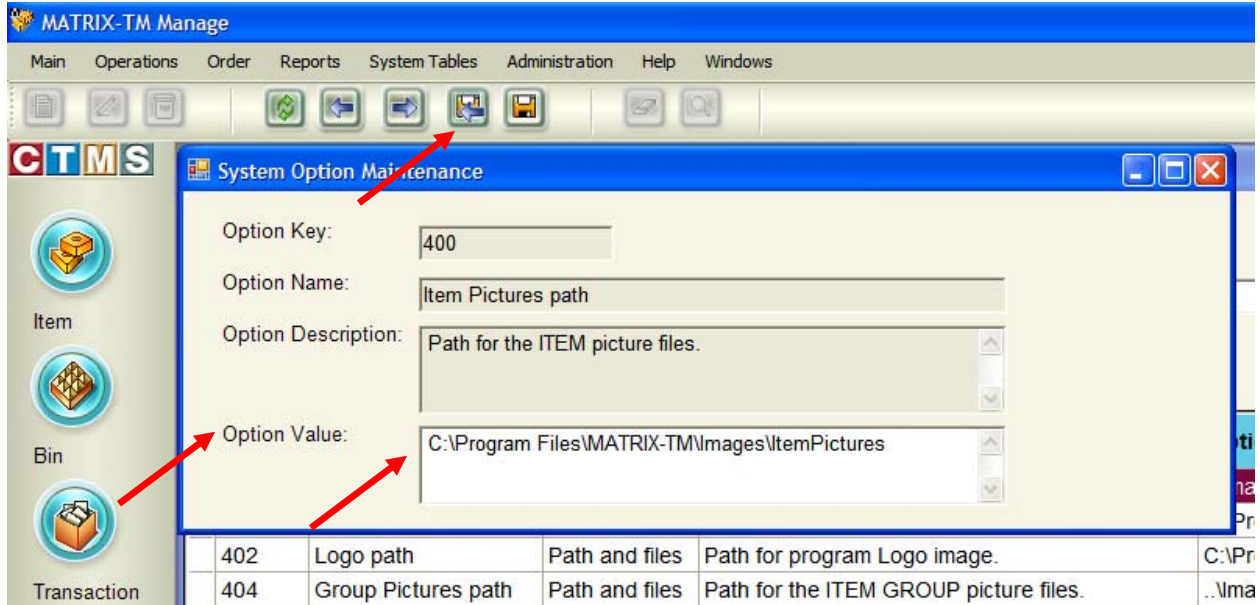
This will bring up this screen. You have two places for Images. The first place is Option 400 for Image Path. To set this double click option 400.



The screenshot shows a window titled "Search System Options" with a search interface and a table of results. The search criteria are: Group: Path and files, Option Key: (empty), Option Name: (empty), and Option Description: (empty). The results table contains 4 records.

Option Key	Option Name	Group	Option Description	Option Value
400	Item Pictures path	Path and files	Path for the ITEM picture files.	..\Images\ItemPictures
401	Reports path	Path and files	Path for automatically generated Scheduling re...	C:\Program Files\MATRIX-TM 4.2...
402	Logo path	Path and files	Path for program Logo image.	C:\Program Files\MATRIX-TM\Im...
404	Group Pictures path	Path and files	Path for the ITEM GROUP picture files.	..\Images\ItemPictures\ItemGroup

This is the window you will be at after you double click option 400. In the option value box you should have the path to where the item pictures are. The default is shown below.
C:\Program Files\MATRIX-TM\Images\ItemPictures Then click on the save and close icon at the top.



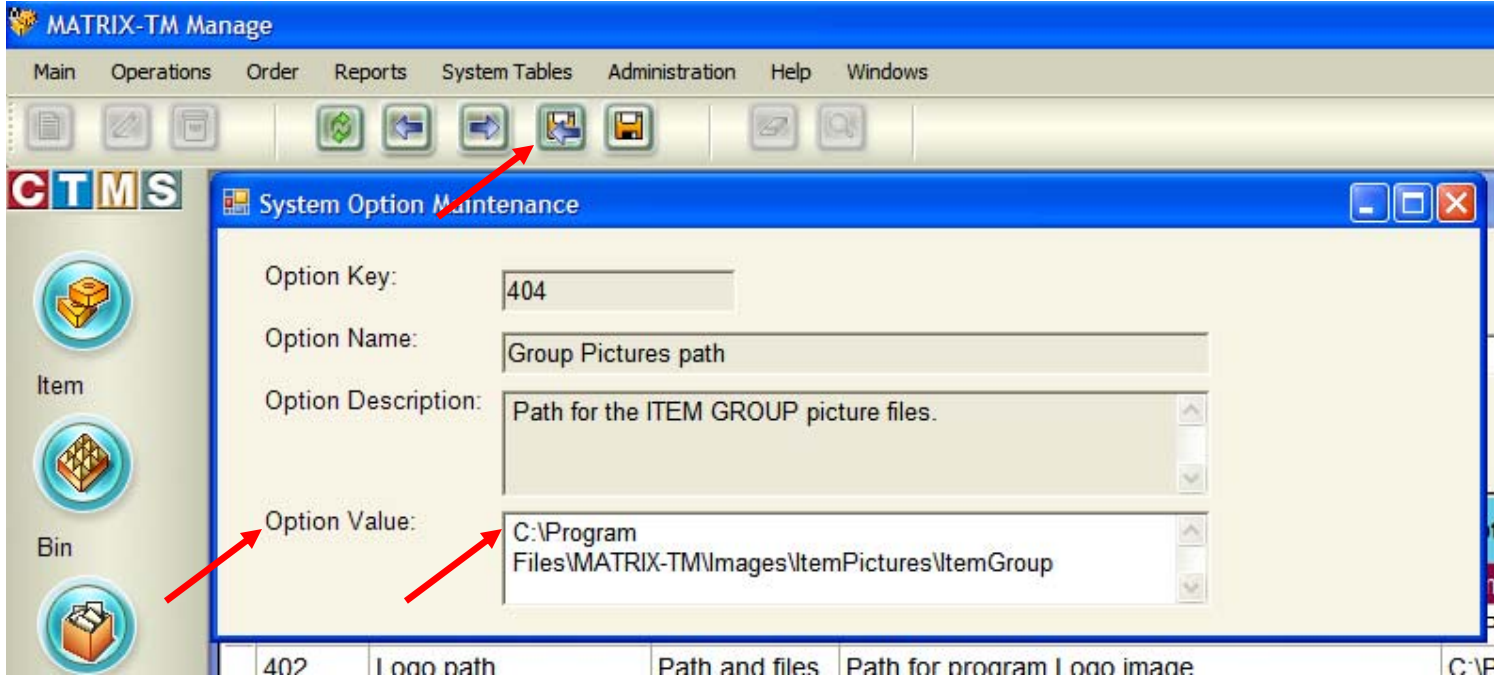
Now double click option 404. This is the Group pictures path.

The screenshot shows the 'MATRIX-TM Manage' application window. A 'Search System Options' dialog box is open, displaying search criteria and a table of results. The search criteria are: Group: Path and files, Option Key: (empty), Option Name: (empty), and Option Description: (empty). The results table shows 4 records, with the last record (Option Key 404) highlighted in red.

Option Key	Option Name	Group	Option Description	Option Value
400	Item Pictures path	Path and files	Path for the ITEM picture files.	..\images\ItemPictures
401	Reports path	Path and files	Path for automatically generated Scheduling re...	C:\Program Files\MATRIX-TM 4.2...
402	Logo path	Path and files	Path for program Logo image.	C:\Program Files\MATRIX-TM\Im...
404	Group Pictures path	Path and files	Path for the ITEM GROUP picture files.	..\images\ItemPictures\ItemGroup

Search Completed. Records Found. (local) / GP50 DO NOT REMOVE!!!

This is the window you will be at after you double click option 404. In the option value box you should have the path to where the item pictures are. The default is shown below.
C:\Program Files\MATRIX-TM\Images\ItemPictures\ItemGroup Then click on the save and close icon at the top.



Now you have set your Item Pictures path as well as your Group Pictures path.