

# NPA

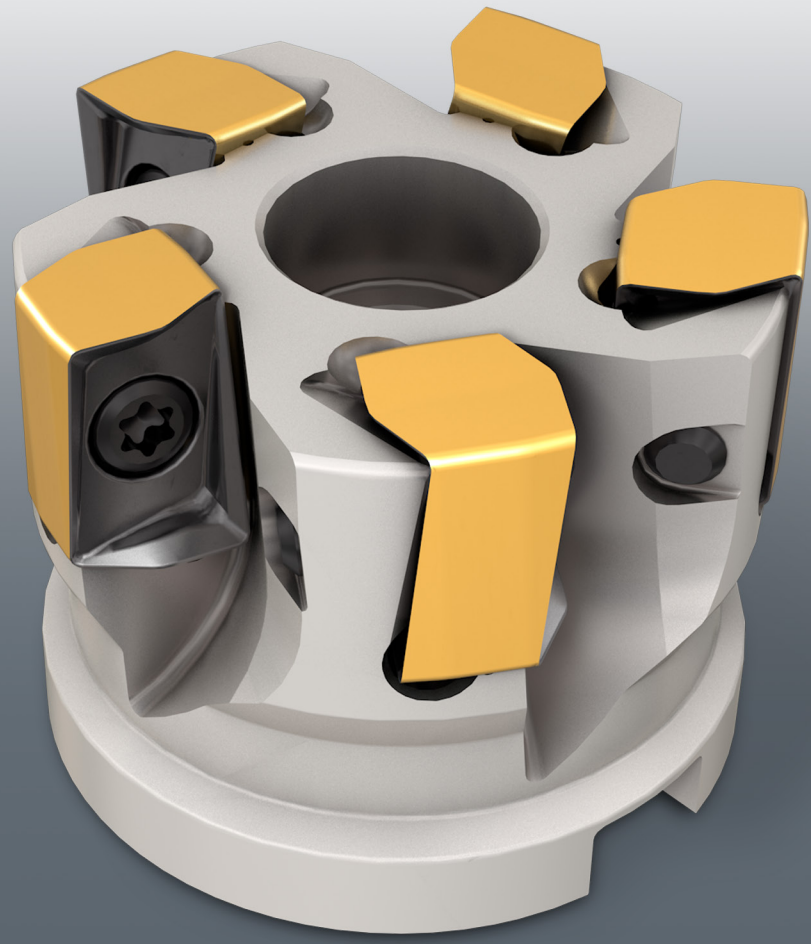
New Product Announcement

MILLING

47-2020

OCTOBER 2020 • METRIC

PAGE 1 / 3



**HELIDO**  
490 LINE

## New HELIDO-490-17 Face Mill Cutter



## Highlights

**ISCAR expands the product range for indexable HELIDO-490-17 face mill cutters with double sided square inserts. These inserts fit the new extra fine pitch face milling cutter which has 5 cutting teeth.**

The new 50mm face milling cutter mounts the popular HELIDO490-17 inserts. The cutters are designed for high productivity milling, and now available with 5 teeth which feature higher metal removal rates and high surface finish.

### Cutter features

- Shell mill design configuration.
- High tooth density.
- Advanced cutting geometry with improved chip evacuation and low cutting forces.
- Ramp down capabilities.
- Coolant holes directed to each insert cutting edge. Effective coolant supply guaranteed through the cutter body.
- Protective coating provides smooth chip flow and tool body resistance to wear and corrosion.

### Applications

- Suitable for milling a variety of steels, hardened steels, stainless steel, cast iron, high temperature alloys and non-ferrous metals.
- The new milling cutter is excellent for milling slots, planes and side plunging.
- Mounting H490 ANKX 1706...FF inserts enables fast feed and ramp down milling with helical interpolations

### Benefits

- Higher productivity.
- Improved surface finish.
- Reduces cutting forces.

The new cutter design with 5 teeth is an addition to the 3 and 4 flute cutters. This new tool will provide a complete solution for face milling with better process control.

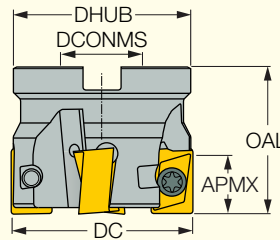
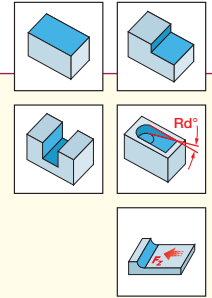
### Availability

In stock.



**H490 F90AX-17**

90° Face Mills Carrying H490 ANKX 17.. Double-Sided Rectangular Inserts with 4 Helical Cutting Edges



NEW

Designation	DC	CICT <sup>(2)</sup>	APMX	OAL	DHUB	DCONMS	Arbor	RMPX <sup>(3)</sup>	CSP <sup>(4)</sup>	
H490 F90AX D040-3-16-17	40.00	3	16.30	40.00	36.00	16.00	A	4.4	1	0.18
H490 F90AX D050-3-22-17	50.00	3	16.30	40.00	48.00	22.00	A	3.8	1	0.32
H490 F90AX D050-4-22-17	50.00	4	16.30	40.00	48.00	22.00	A	3.8	1	0.30
H490 F90AX D050-5-22-17	50.00	5	16.30	40.00	48.00	22.00	A	3.8	1	0.48
H490 F90AX D063-4-27-17	63.00	4	16.30	50.00	59.20	27.00	A	2.0	1	0.63
H490 F90AX D063-6-27-17	63.00	6	16.30	50.00	59.20	27.00	A	2.0	1	0.67
H490 F90AX D080-5-27-17	80.00	5	16.30	50.00	63.00	27.00	B	1.5	1	0.79
H490 F90AX D080-7-27-17	80.00	7	16.30	50.00	63.00	27.00	B	1.5	1	0.80
H490 F90AX D100-5-32-17	100.00	5	16.30	50.00	80.00	32.00	B	1.0	1	1.39
H490 F90AX D100-8-32-17	100.00	8	16.30	50.00	80.00	32.00	B	1.0	1	1.47
H490 F90AX D125-7-40-17	125.00	7	16.30	63.00	82.00	40.00	B	-	1	2.24
H490 F90AX D125-10-40-17	125.00	10	16.30	63.00	82.00	40.00	B	-	1	5.41
H490 F90AX D160-8-40-17 <sup>(1)</sup>	160.00	8	16.30	63.00	105.00	40.00	C	-	0	3.64
H490 F90AX D160-12-40-17 <sup>(1)</sup>	160.00	12	16.30	63.00	105.00	40.00	C	-	0	4.09
H490 F90AX D200-10-60-17	200.00	10	16.30	63.00	135.00	60.00	C	-	0	5.99
H490 F90AX D250-12-60-17	250.00	12	16.30	63.00	144.00	60.00	C	-	0	9.36

• Ramping angle is valid only when H490 ANKX 1706R15T-FF insert is used (tool diameter is then 1.5 mm larger)

<sup>(1)</sup> For internal coolant through the holder, use a matching coolant set (should be ordered separately)

<sup>(2)</sup> Number of inserts

<sup>(3)</sup> Maximum ramping angle

<sup>(4)</sup> 0 - Without coolant supply, 1 - With coolant supply

**Spare Parts**



Designation	Screw	Torx Blade	T-Handle	Shell Locking Screw
H490 F90AX D040-3-16-17	SR 14-591	BLD T20/M7	SW6-T	SR M8X25DIN912
H490 F90AX D050-3-22-17	SR 14-591	BLD T20/M7	SW6-T	SR M10X25 DIN912
H490 F90AX D050-4-22-17	SR 14-591	BLD T20/M7	SW6-T	SR M10X25 DIN912
H490 F90AX D050-5-22-17	SR 14-591	BLD T20/M7	SW6-T	SR M10X25 DIN912
H490 F90AX D063-4-27-17	SR 14-591	BLD T20/M7	SW6-T	SR M12X30DIN912
H490 F90AX D063-6-27-17	SR 14-591	BLD T20/M7	SW6-T	SR M12X30DIN912
H490 F90AX D080-5-27-17	SR 14-591	BLD T20/M7	SW6-T	
H490 F90AX D080-7-27-17	SR 14-591	BLD T20/M7	SW6-T	
H490 F90AX D100-5-32-17	SR 14-591	BLD T20/M7	SW6-T	
H490 F90AX D100-8-32-17	SR 14-591	BLD T20/M7	SW6-T	
H490 F90AX D125-7-40-17	SR 14-591	BLD T20/M7	SW6-T	
H490 F90AX D125-10-40-17	SR 14-591	BLD T20/M7	SW6-T	
H490 F90AX D160-8-40-17	SR 14-591	BLD T20/M7	SW6-T	
H490 F90AX D160-12-40-17	SR 14-591	BLD T20/M7	SW6-T	
H490 F90AX D200-10-60-17	SR 14-591	BLD T20/M7	SW6-T	
H490 F90AX D250-12-60-17	SR 14-591	BLD T20/M7	SW6-T	