

# NPA

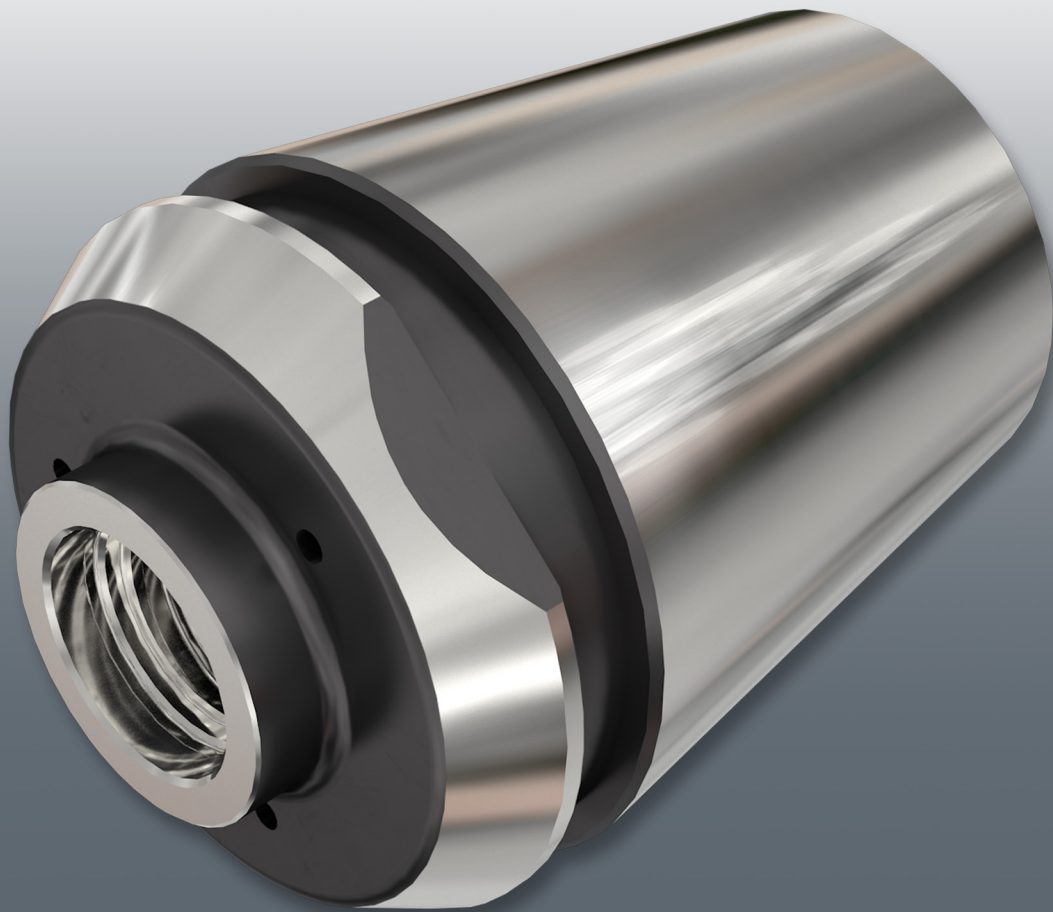
New Product Announcement

MILLING

18-2021

APRIL 2021 • INCH

PAGE 1 / 3



**MULTI-MASTER**  
INDEXABLE HEADS

**New MultiMaster Short ER32 Integral Collets  
with New Coolant Options Intended for Lathes  
and Swiss Type Machines.**

**MULTI-MASTER**  
INDEXABLE HEADS

## Highlights

**ISCAR Expands the MULTI-MASTER family by introducing new Short ER32 Integral Collets with 3- internal coolant channels, for lathes and Swiss Type Machines.**

The new collets have a .16" overhang and 3 coolant channels assuring accurate flow directed to the cutting edge. The new collets are available with the standard **MULTI-MASTER** T05, T06, T08, T10, T12 & T15 thread connections.

The new shanks provide highly rigid clamping for **MULTI-MASTER** milling heads, as they are connected to the machine tool spindle without adapters. The new ER shanks and the large assortment of **MULTI-MASTER** heads open the door for new opportunities.

We believe that introducing new MM ER... shanks will provide more applications and will contribute to advancing **MULTI-MASTER** products in your market.

**Click Link to  
See Short Video**

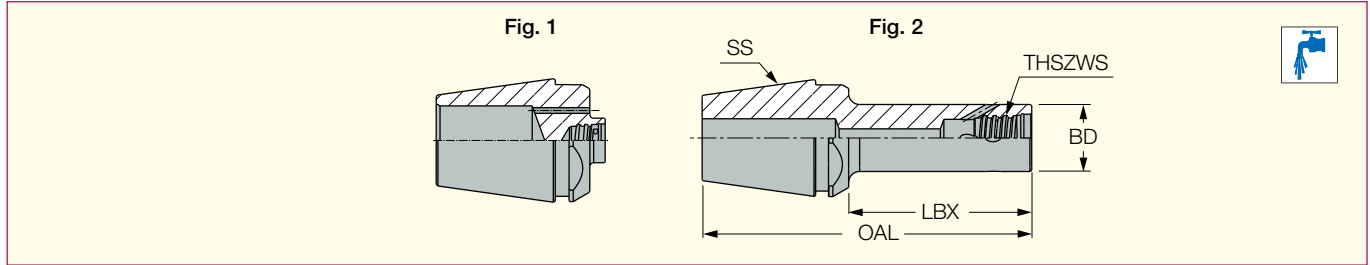


<https://youtu.be/iqHrp8noAPI>

## MULTI-MASTER INDEXABLE HEADS

### MM S-ER-H

Shanks for MULTI-MASTER Solid Carbide Heads with an ER Collet Adaptation and Coolant Holes



	Designation	SS	THSZWS	BD	LBX	OAL	Fig.	
NEW	MM S-A-H004-ER32-T05-H	ER32	T05	.299	.16	1.732	1	.31
	MM S-A-H025-ER32-T05-H	ER32	T05	.299	.98	2.559	2	.44
	MM S-A-H040-ER32-T05-H	ER32	T05	.299	1.57	3.150	2	.51
NEW	MM S-A-H004-ER32-T06-H	ER32	T06	.378	.16	1.732	1	.31
	MM S-A-H025-ER32-T06-H	ER32	T06	.364	.98	2.559	2	.44
	MM S-A-H040-ER32-T06-H	ER32	T06	.364	1.57	3.150	2	.48
NEW	MM S-A-H004-ER32-T08-H	ER32	T08	.457	.16	1.732	1	.32
	MM S-A-H025-ER32-T08-H	ER32	T08	.457	.98	2.559	2	.44
	MM S-A-H050-ER32-T08-H	ER32	T08	.457	1.97	3.543	2	.50
NEW	MM S-A-H004-ER32-T10-H	ER32	T10	.602	.16	1.732	1	.31
	MM S-A-H025-ER32-T10-H	ER32	T10	.602	.98	2.559	2	.44
	MM S-A-H050-ER32-T10-H	ER32	T10	.598	1.97	3.543	2	.54
NEW	MM S-A-H004-ER32-T12-H	ER32	T12	.720	.16	1.732	1	.32
	MM S-A-H025-ER32-T12-H	ER32	T12	.720	.98	2.559	2	.48
	MM S-A-H050-ER32-T12-H	ER32	T12	.720	1.97	3.543	2	.48
NEW	MM S-A-H004-ER32-T15-H	ER32	T15	.941	.16	1.732	1	.34
	MM S-A-H025-ER32-T15-H	ER32	T15	.941	.98	2.559	2	.47
	MM S-A-H050-ER32-T15-H	ER32	T15	.941	1.97	3.543	2	.55

• Do not apply lubricant to the threaded connection.