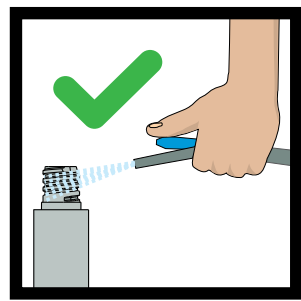
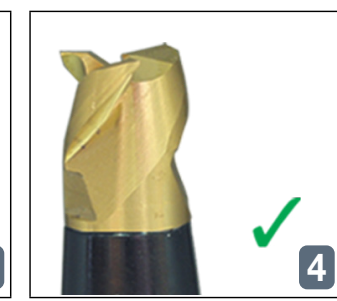
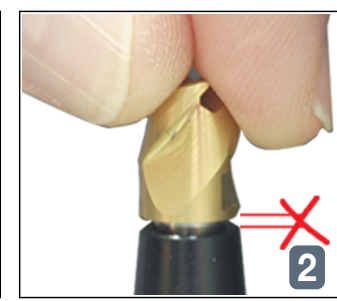
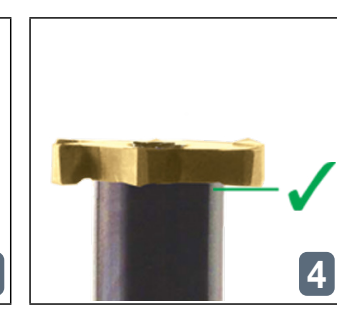
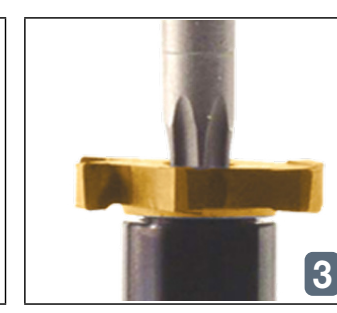
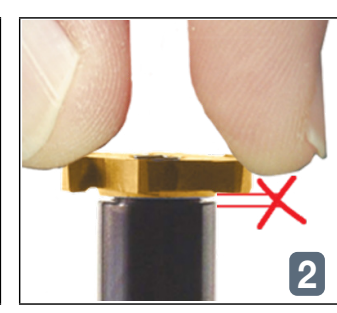


Clamping and Indexing Instructions



Do not apply lubricant to the threaded connection

Thread Size	Key ⁽¹⁾	Tightening Torque (N x m)	Tightening Torque (Lbf x in)
T04	MM KEY 4x3	4	35
T05	MM KEY 6x4	7	60
T06	MM KEY 8x5	10	90
T08	MM KEY 10x7	15	130
T10	MM KEY 13x8	28	250
T12	MM KEY 16x9	28	250
T15	MM KEY 20	40	350
T21	MM WRENCH 24x21	110	975



Do not apply lubricant to the threaded connection.

⁽¹⁾ Order separately