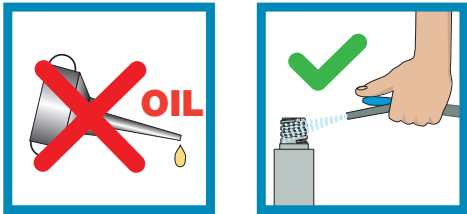
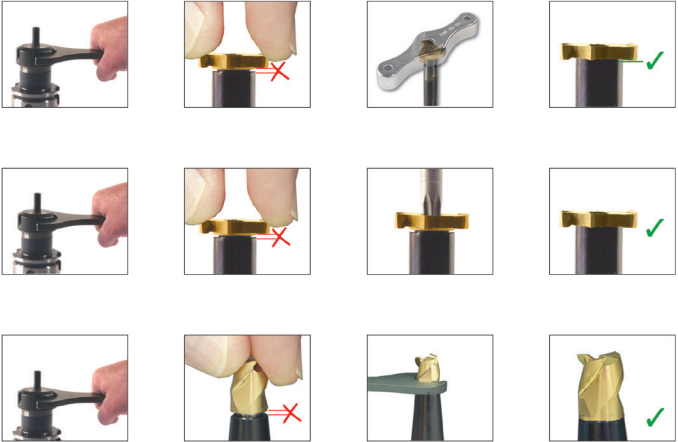
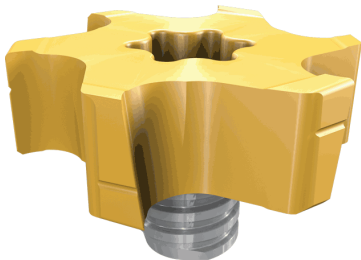


Clamping and Indexing Instructions

Thread Size	Key <sup>(1)</sup>	Tightening Torque (Nxcmm)	Tightening Torque (Lbfxinch)
T04	MM KEY 6x4	400	35
T05	MM KEY 6x4	700	60
T06	MM KEY 8x5	1000	90
T08	MM KEY 10x7	1500	130
T10	MM KEY 13x8	2800	250
T12	MM KEY 16x9	2800	250
T15	MM KEY 20	4000	360
T21	MM WRENCH 24-21	11000	973

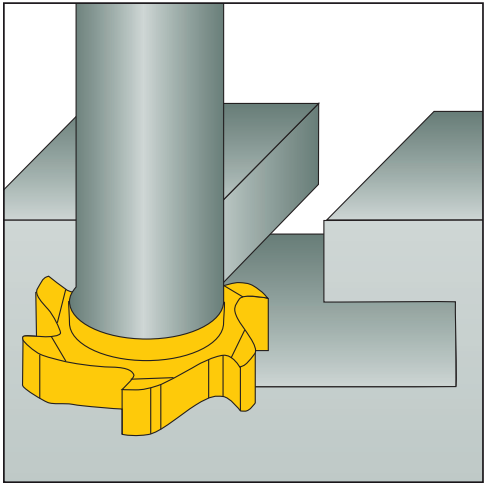
Order separately <sup>(1)</sup>

All grooving heads with  $W \geq 5$  mm feature split cutting edges that produce narrow chips for improved chip disposal. As the splitting grooves are located in different position on alternating edges, flat groove bottom is achieved.

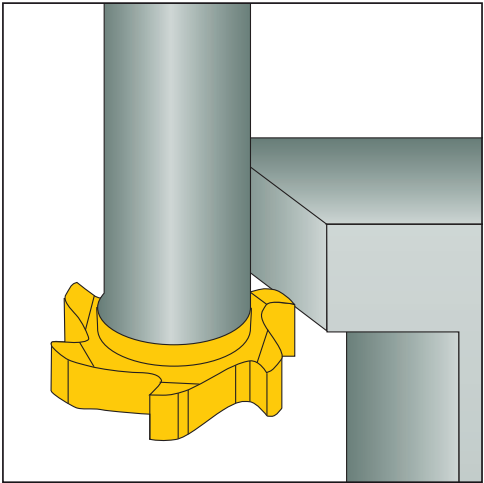


Do not apply lubricant to the threaded connection.

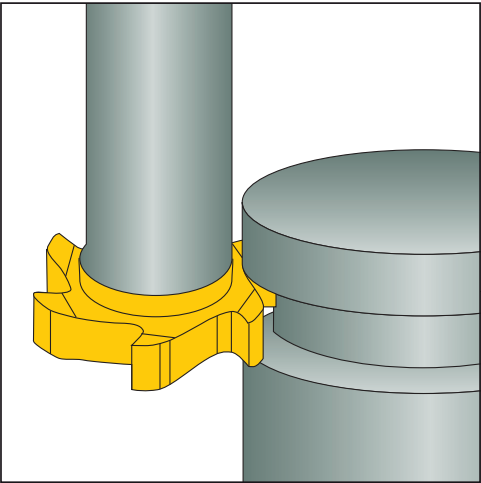
Typical Applications



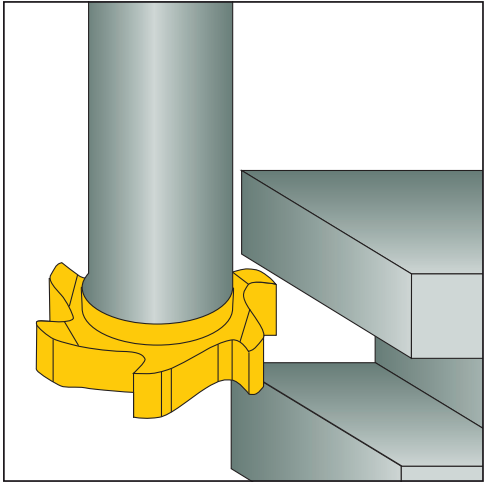
T Slot



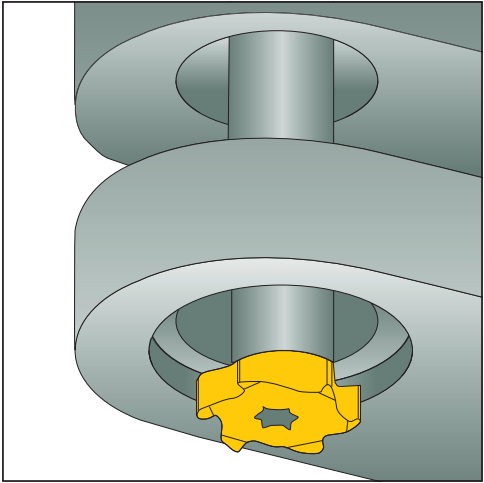
Bottom Deburring



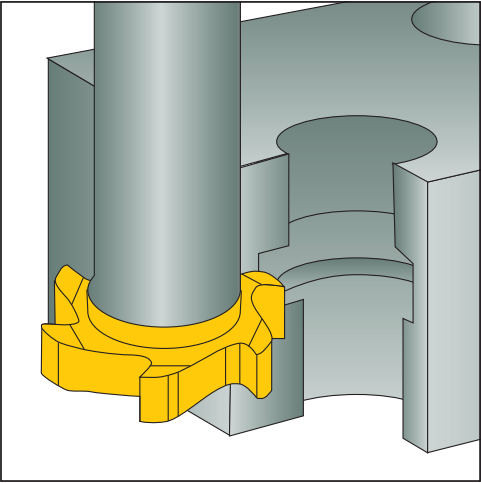
Circular Groove



Straight Groove



Bottom Circular Groove



Internal Circular Groove