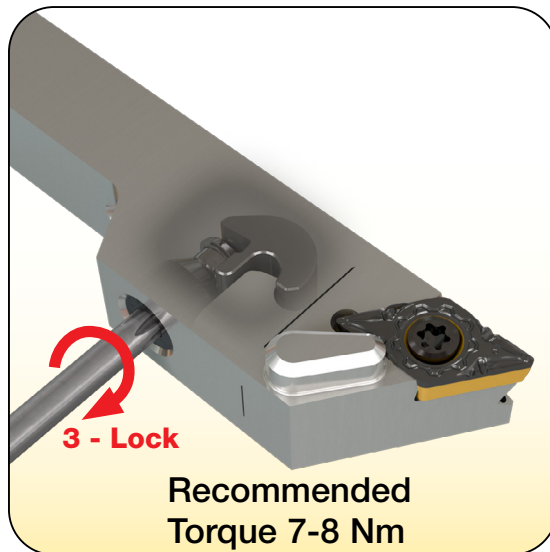
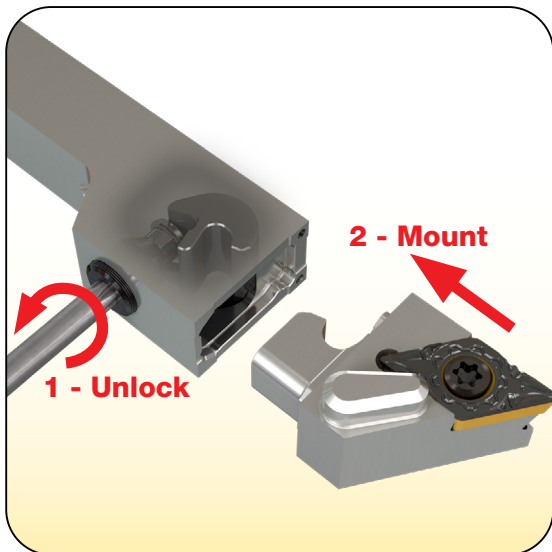


Clamping Operation Steps



Recommended Torque 7-8 Nm

Attention!

- The clamping screw is not removeable.
- To avoid damage, avoid excessive force when opening or clamping.
- Do not disassemble the tool to avoid damage to the clamping mechanism.

Supplied Accessories

Item No: 7003805
SW6-T-SH



Item No: 7002553
BLD IP20/S7

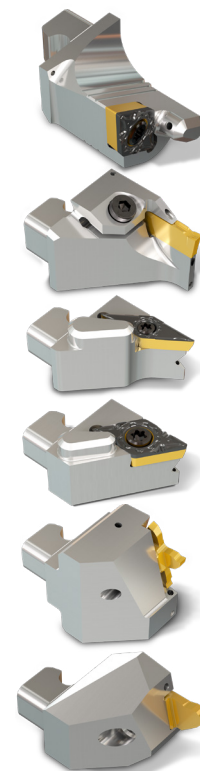


Recommended Accessories (optional)

Item No: 7007221
TSA 6 5-14 Nm



Item No: 7007027
BLD 6 T20IP

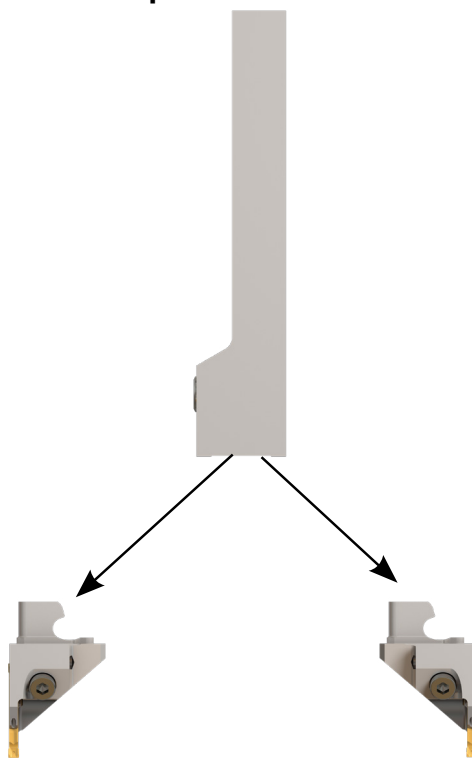


Shank's left-hand orientation
for the left-hand tool machine
Example: NQCH1212/1616



Left hand head
Example: NQCH12/16-DGTL...

Shank's right-hand orientation
for the right-hand tool machine
Example: NQCH1212/1616



Left hand head for Shank's
right-hand orientation
Example: NQCH12R/16R-DGTL...

* Available for Grooving & Parting

Right hand head
Example: NQCH12/16-DGTR...

GANG / TOOL POST

