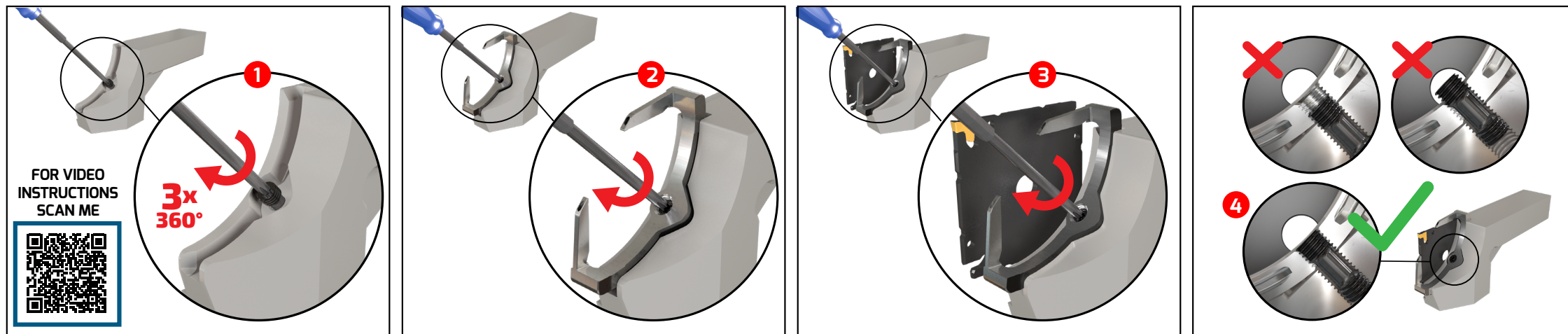


CROWN assembly instructions

1. Insert the screw into the hole of the block and turn it 3 to 4 times (the screw is available in every package).
2. Place the crown on the screw and continue rotating the screw. Make sure the upper thread enters the crown hole and that the crown moves towards the block.
3. Mount the adapter on the block and tighten the screw until the adapter is clamped.
4. Make sure the screw does not project in an upward direction from the crown, it must be aligned with the crown.



**Click Link to
See Short Video**

**[https://www.iscar.com/newarticles.aspx/
countryid/1/newarticleid/10527](https://www.iscar.com/newarticles.aspx/countryid/1/newarticleid/10527)**

Ensure the clamping screw is aligned with the crown.

