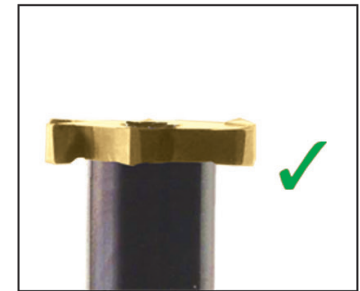
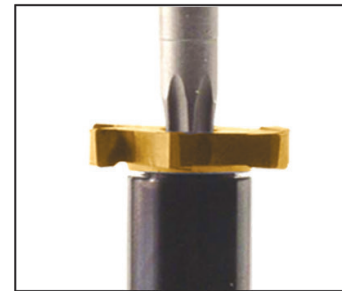
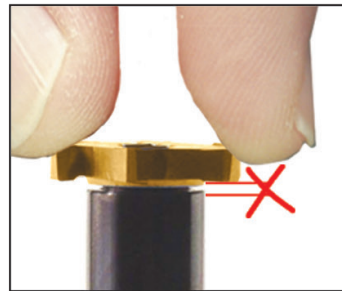
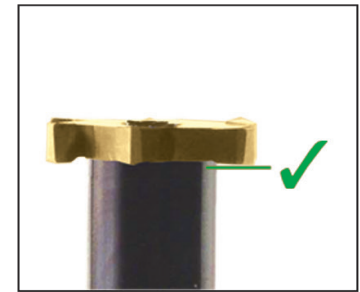
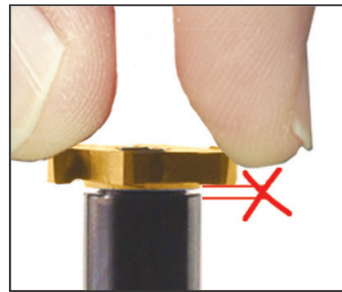


MULTI-MASTER

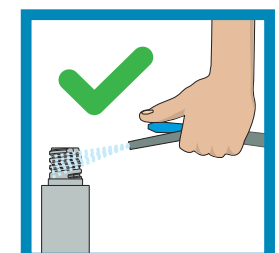
INDEXABLE SOLID CARBIDE LINE

Clamping and Indexing Instructions



Thread Size	Key ⁽¹⁾	Tightening Torque (Nxcm)	Tightening Torque (Lbfxinch)
T04	MM KEY 6x4	400	35
T05	MM KEY 6x4	700	60
T06	MM KEY 8x5	1000	90
T08	MM KEY 10x7	1500	130
T10	MM KEY 13x8	2800	250
T12	MM KEY 16x9	2800	250
T15	MM KEY 20	4000	360
T21	MM WRENCH 24-21	11000	973

Order separately ⁽¹⁾



Do not apply lubricant to the threaded connection.